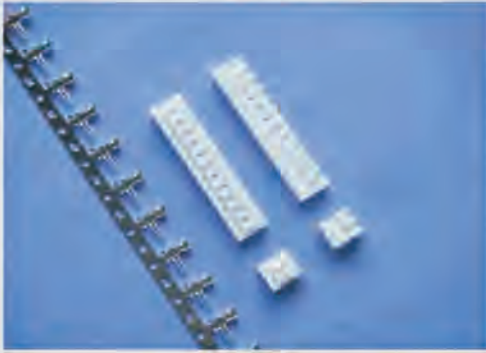


B250005

JC25



- ▶ 主要技术特性 (Main Specifications)
- ▶ 适用导线规格 (Applicable wire) : AWG28#~22#
- ▶ 适用基板厚度 (Applicable PC board thickness) : 1.2mm~1.6mm
- ▶ 温度范围 (Temperature range) : -25°C~+85°C
- ▶ 额定电压 (Voltage rating) : 250V AC, DC
- ▶ 额定电流 (Current rating) : 2A AC, DC
- ▶ 接触电阻 (Contact resistance) : $\leq 0.02\Omega$
- ▶ 绝缘电阻 (Insulation resistance) : $\geq 1000M\Omega$
- ▶ 耐压 (Withstanding voltage) : 1000V AC/minute

材料及电镀规格 Material and Finish

型号 Type	材料 Material	材料厚度 Material Thickness	电镀规格 Finish
孔座 HOUSING	PA66 UL94V-0	—	N/A
端子 TERMINAL	锡青铜 Phosphor bronze	0.2mm	镀锡 Tin-plated

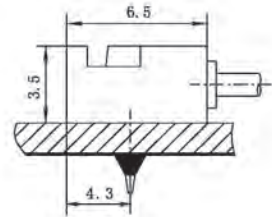
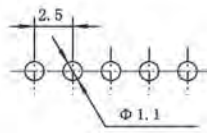
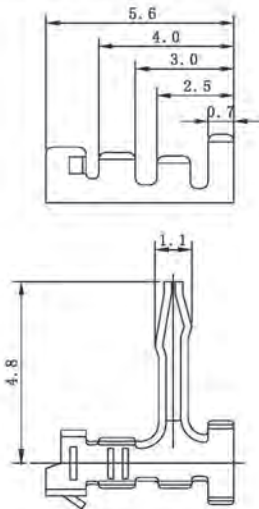
产品尺寸图 Product size chart

 单位: mm 一般公差: ± 0.20

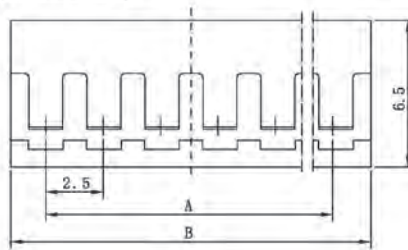
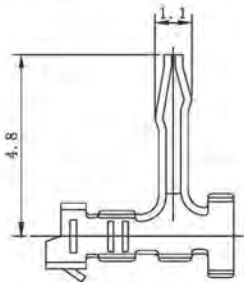
TERMINAL

B250005-4 JC25

安装尺寸 (Mounting measurement)



HOUSING

B250005-2


HOUSING

极数 Circuits	型号 Type	尺寸 (Dimensions) mm		备注型号 P. S. Type
		A	B	
2	B250005-2-02	2.5	5.5	JC25-02Y
3	B250005-2-03	5.0	8.0	JC25-03Y
4	B250005-2-04	7.5	10.5	JC25-04Y
5	B250005-2-05	10.0	13.0	JC25-05Y
6	B250005-2-06	12.5	15.5	JC25-06Y
7	B250005-2-07	15.0	18.0	JC25-07Y
8	B250005-2-08	17.5	20.5	JC25-08Y
9	B250005-2-09	20.0	23.0	JC25-09Y
10	B250005-2-10	22.5	25.5	JC25-10Y
11	B250005-2-11	25.0	28.0	JC25-11Y
15	B250005-2-15	35.0	38.0	JC25-15Y